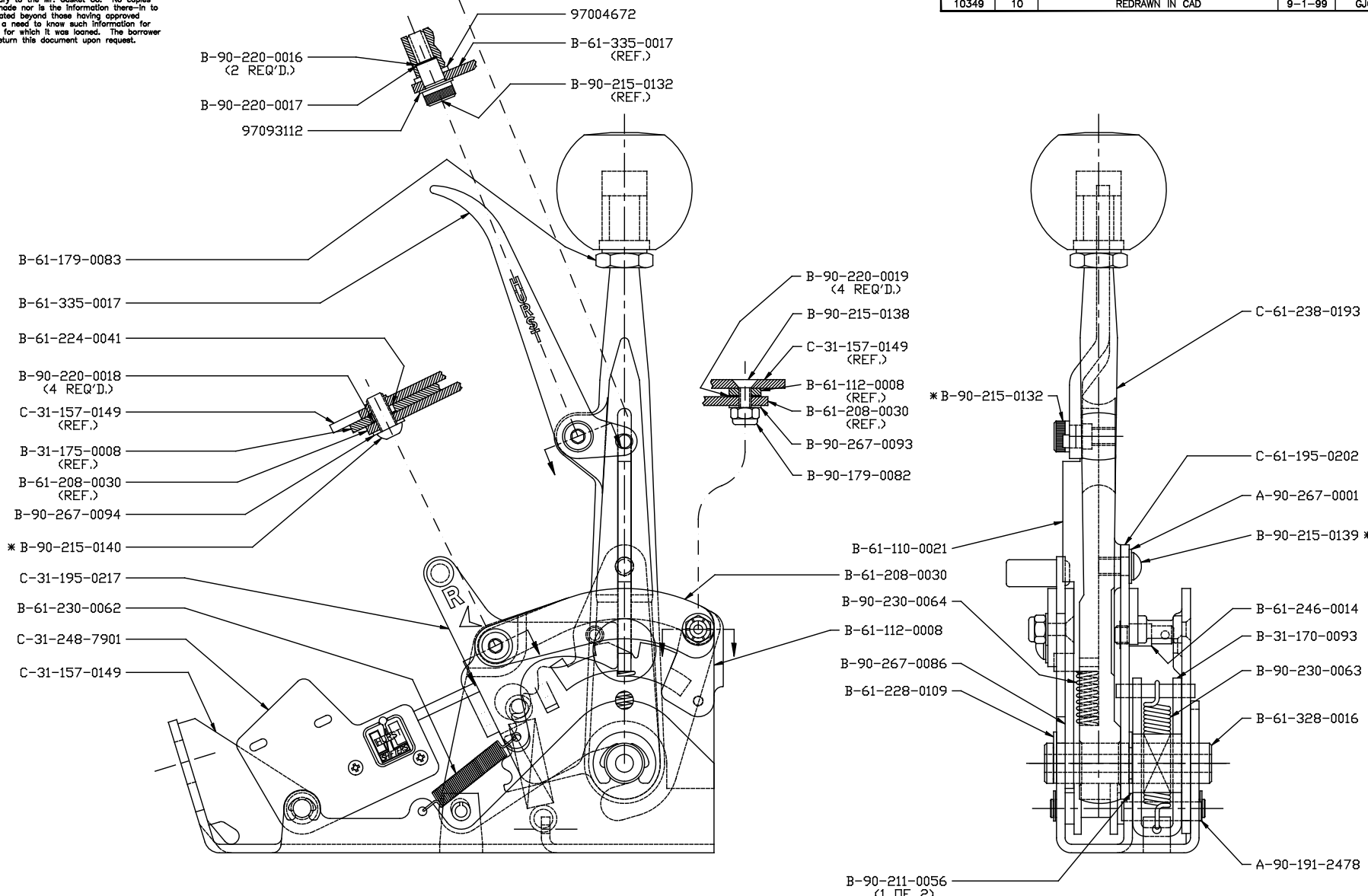


**CONFIDENTIAL**

The concepts in this document are unpublished and are proprietary to the Mr. Gasket Co. No copies are to be made nor is the information there-in to be disseminated beyond those having approved access and a need to know such information for the purpose for which it was loaned. The borrower agrees to return this document upon request.

REVISIONS				
ECN	ISSUE	DESCRIPTION	DATE	APPROVED
10349	10	REDRAWN IN CAD	9-1-99	GJC



**NOTES:**

- LUBRICATE ALL BEARING & WEAR SURFACES WITH SYNCOLUBE MULTI PURPOSE EP GREASE WITH PTFE (RAW MATERIAL SPEC. A-92-149-0013).
- \* USE WITH LOCTITE ON SCREWS B-90-215-0131, B-90-215-0132, B-90-215-0139 & B-90-215-0140.

<b>TOLERANCES</b> (UNLESS OTHERWISE SPECIFIED) FRACT. 2 PLCS. 3 PLCS. ANGLES $\pm 1/64$ $\pm .01$ $\pm .005$ $\pm 1^\circ$				DR. G. J. CURTIS APPV'D.	DATE 9-1-99 DATE	<b>MR. GASKET CO.</b> 10601 MEMPHIS AVE. #12 CLEVELAND, OH 44144
MAT'L. ----- HEAT TREAT ----- FINISH ----- NEXT ASSY. A-00-316-0001				REMOVE ALL BURRS AND SHARP EDGES DO NOT SCALE DWG.		TITLE <b>ASSEMBLY - SHIFTER                  AUTOMATIC/COMPETITION                  (POWER GLIDE)</b>
STK-NUMBER 316-0003 CAT. NUMBER 10908				SIZE C SCALE 1/1	DWG. NO. 31-316-0003 DISK NO.	ISSUE 10 SHEET 1 OF 1