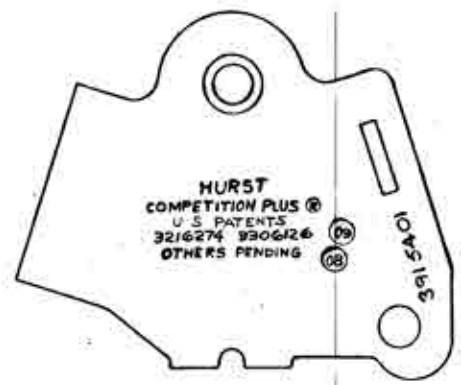
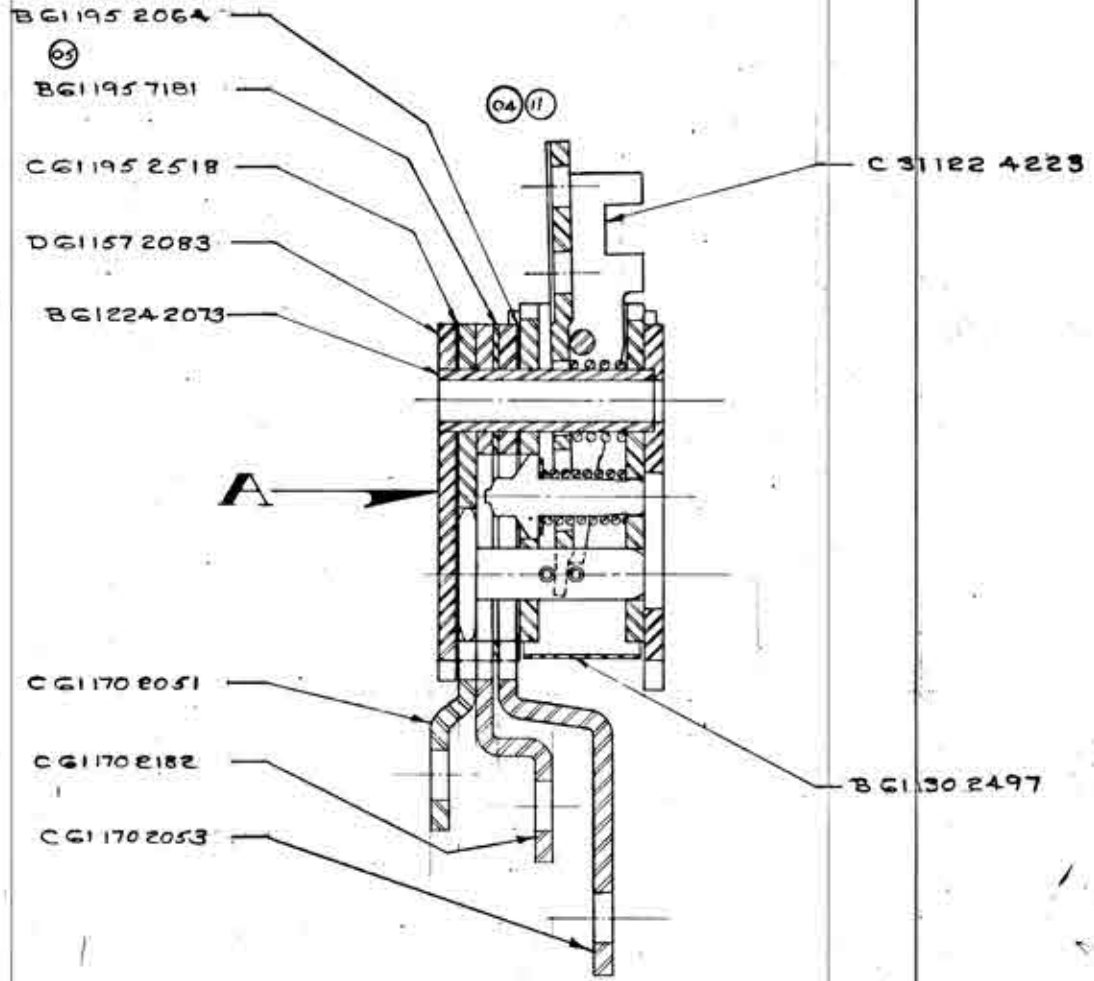
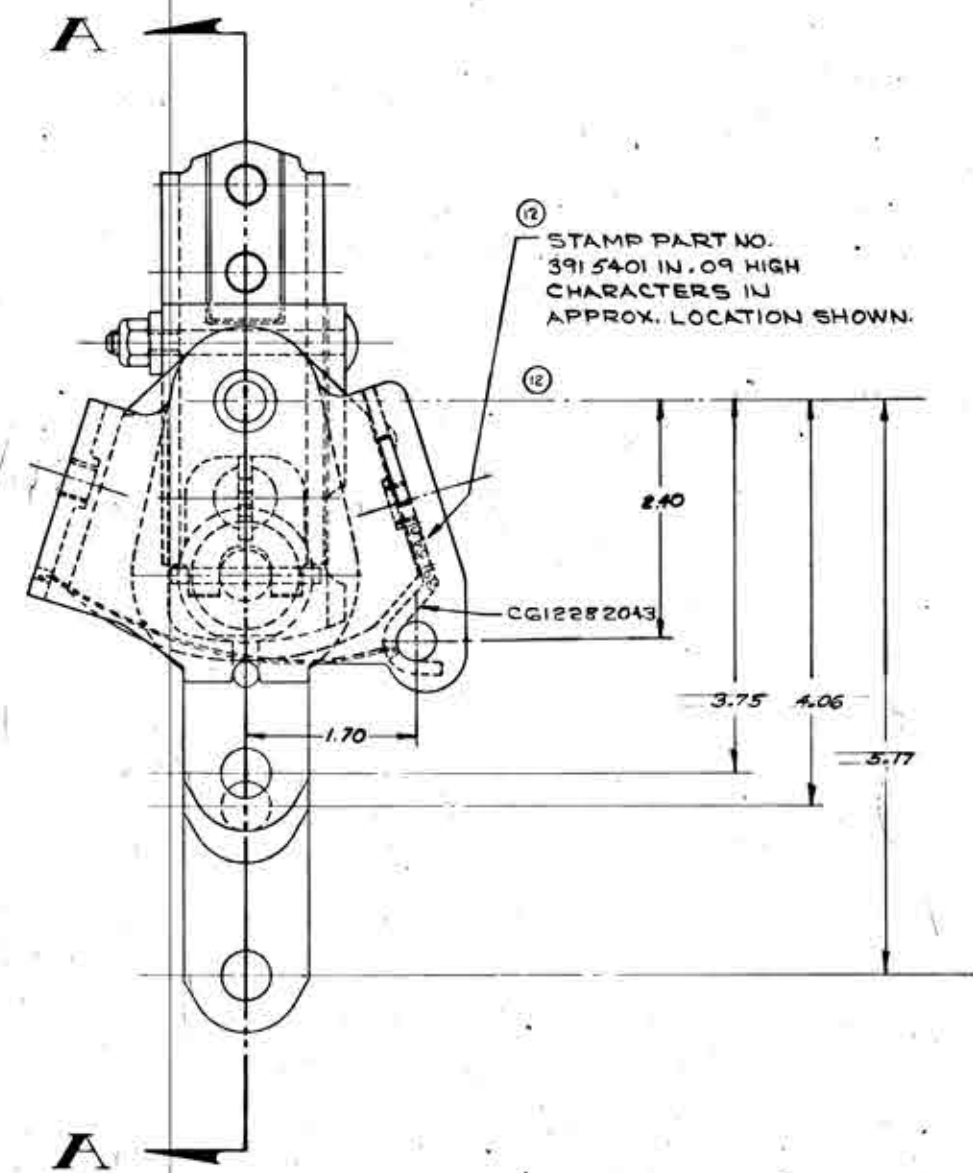


REV NO	LET	REVISION	BY	DATE
	A	REL FOR PRODUCTION	GR	1-5-66
1572	B1	VOIDED PARTS LIST. REMOVED BALLOONS. ADDED CALLOUTS.	JRS	4-26-68
	03	NEW NUMBER		10/29/68
1030	04	VIEW OF C-4223 REVISED TO SHOW DUAL WELDNUT	LWT	2-3-69
2281	05	B-7181 WAS B-2408 (AM)	MS	9-28-69
2412	06	B-7151 WAS D-860	RP	1-18-60
2224	07	REN'D STAMP SERIAL NO. IN APPROX POSITION SHOWN.	CV	4-17-70
	08	PATENT STAMP REVISED. SEE DETAIL D-61572008 REV 31.	ED	5-15-70
	09	PATENT STAMP REVISED SEE DETAIL D-61572008, REV 32	ED	6-1-70
3534	10	REN'D: B-9164151 LABEL	MS	7-13-71
	11	REM'D WELDNUT	RE	5-1-73
	12	REM'D A311336801 A31133681. ADDED STAMP PART NO. --- LOCATION SHOWN	RE	1-11-75



VIEW - A



SECTION - A-A

NOTES:
1) LUBRICATE ALL BEARING AND WEAR SURFACES WITH STANOLUBE #81N3 SPECIAL PURPOSE GREASE

ITEM QTY	PT. NO.	PART NAME	REMARKS
14	1	3661 ASSY 1 STOP BOLT	✓
15	1	3680 HDS Y, 1/4" STOP BOLT	✓
12	1	2053 LEVER REV.	✓
11	1	2182 LEVER 1ST 2ND	✓
10	1	2051 LEVER 3RD 4TH	✓
9	1	2043 SPACER HOUSING	✓
8	1	2073 SLEEVE	✓
7	1	2083 HOUSING	✓
6	1	2518 WAVE PLATE	✓
5	1	2408 INTERLOCK PLATE	✓
4	1	2064 REVERSE SAFETY PLATE	✓
3	1	2497 DUST COVER	✓
2	1	STICKER-PRESS SENS SHPT	FORM AC-55-908
1	1	4223 CARRIER ASSY	✓

PARTS LIST			
DO NOT SCALE	TOLERANCE: DEC	TRACT	ANGLES
REMOVE ALL BURRS & SHARP EDGES	NAME		
END USE	4 SPEED SHIFTER ASSY BOLT ON STICK		
PART L	DR. WM	CHKR	SCALE
HEAT TREAT	ROLLAND	CHKR	FULL
FINISH	DATE 4-7-66	DATE	APP'D BY
	HURST-CAMPBELL INC	WREMINSTER, PA.	DENS NO. 5401

313915401