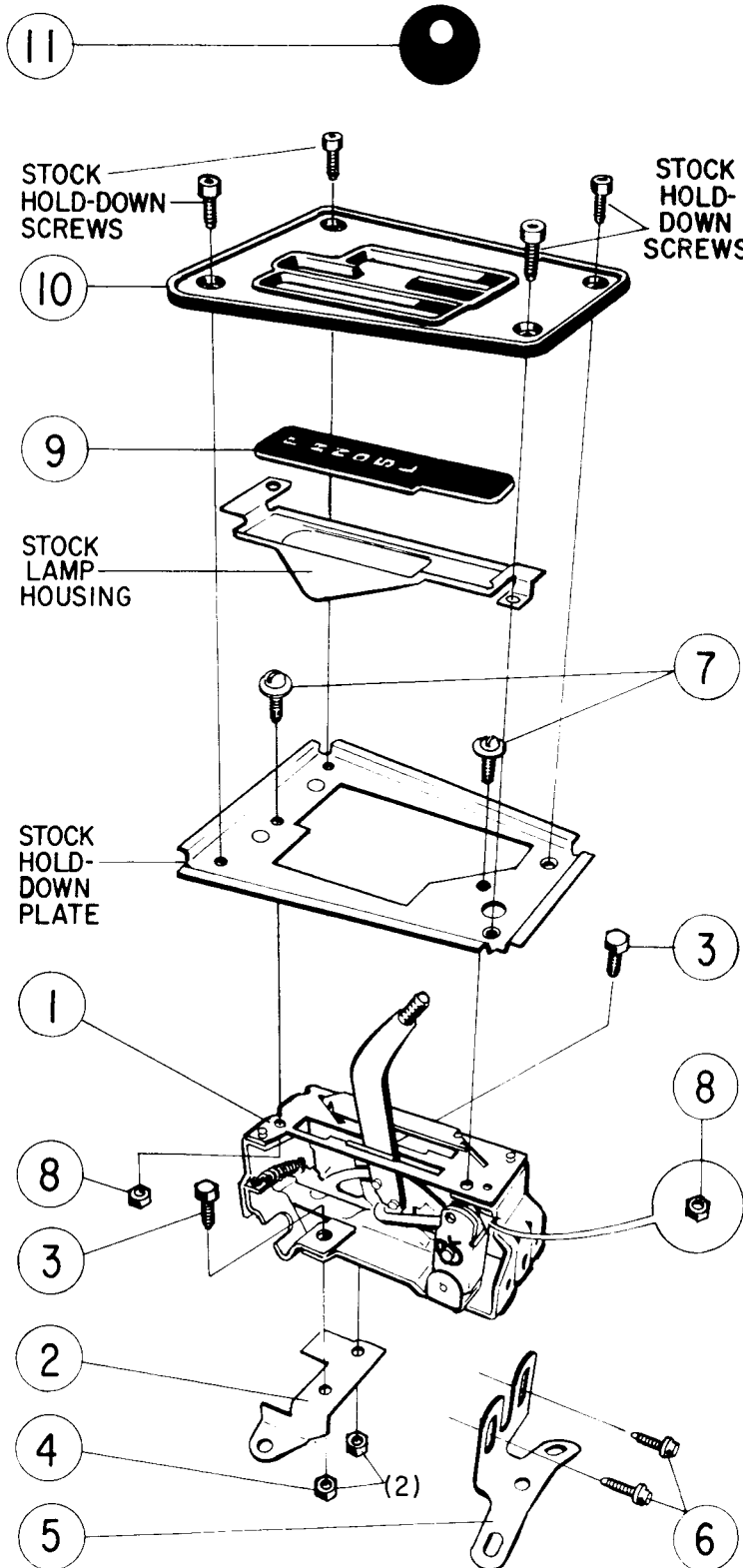




dual/gate 2



INSTALLATION INSTRUCTIONS

292 0001
COMPLETE INSTALLATION

292 0002
SHIFTER ONLY

'73-'80 '70-'80
Camaro/Firebird

CONTENTS OF KIT

1. SHIFTER ASSEMBLY	Pt. 292 0002
2. FRONT BRACKET	Pt. 117 0144
3. 5/16-24 x 1/2 HEX-HEAD CAP SCREW	Pt. 215 0107 (2)
4. 5/16-24 HEX-NUT	Pt. 179 0003 (2)
5. REAR BRACKET	Pt. 117 0145
6. 1/4-20 x 1/2 SELF-TAPPING SCREW	Pt. 272 0012 (2)
7. #10-32 x 3/8 SLOT'D. WASH.-HD. SCRW	Pt. 271 0009 (2)
8. #10-32 HEX-NUT	Pt. 179 3490 (2)
9. LENS-SHIFT INDICATOR	Pt. 169 0002
10. ESCUTCHEON	Pt. 140 0001
11. KNOB	Pt. 163 7200

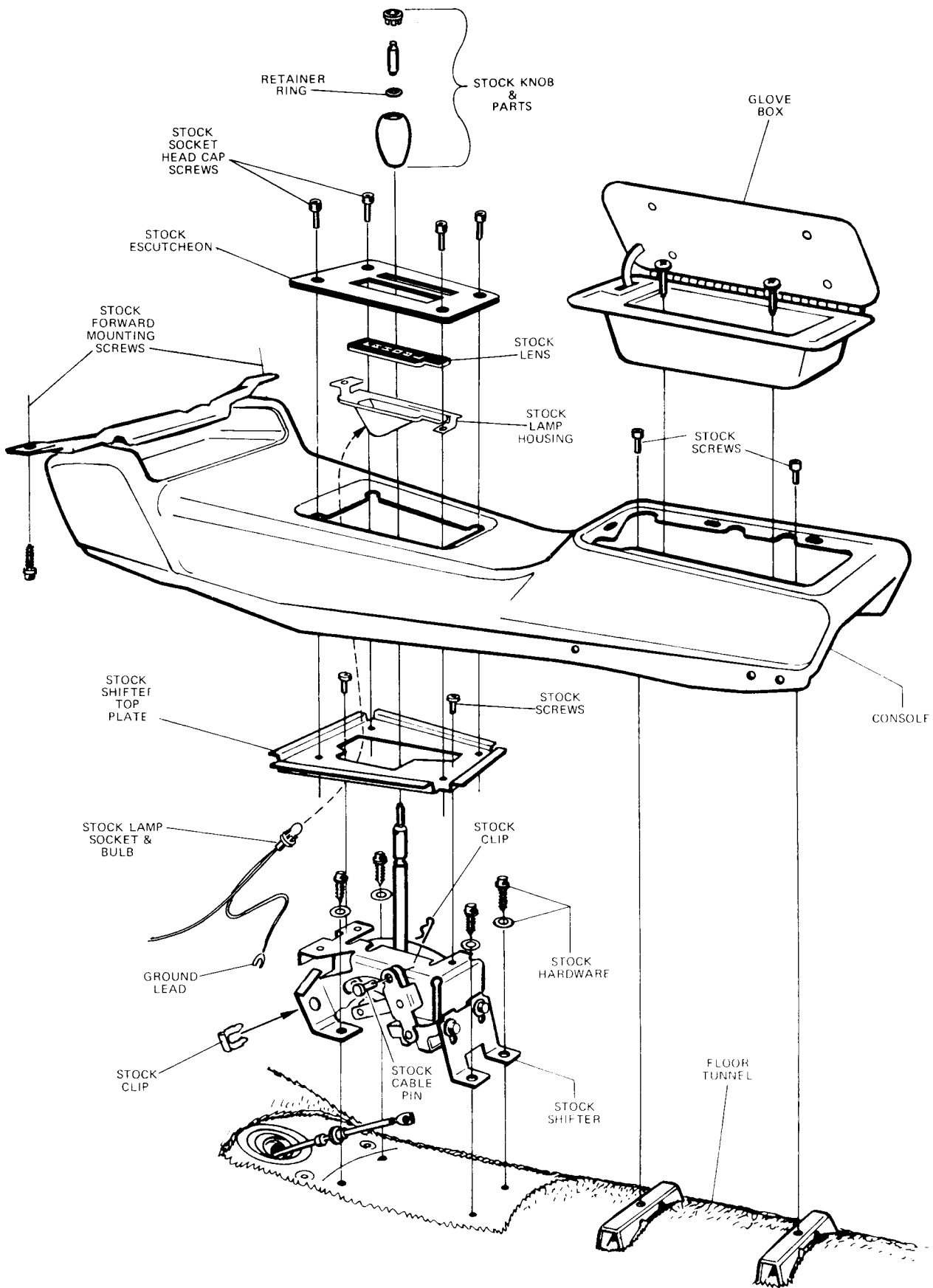
BAGGED HARDWARE PACKAGE—Pt. 154 0135

TEXT ON PAGE 2

1. Disconnect battery. Move shifter stick to “**N**” (Neutral). Loosen nut on cable pin in transmission arm (underneath car). **DO NOT REMOVE NUT.**
2. Remove the “**Park**” release button on top of stock knob. Remove retainer ring (in well under release button) to free knob from stick. Remove 4 socket head hold-down screws and escutcheon plate.
3. Remove 2 screws from bottom of console glove box. Remove glove box. Remove 2 rear hold-down screws from console. (These 2 screws are found in the opening where glove box was removed). Remove 2 screws from forward mounting bracket to underside of instrument panel. Wiring under console must be freed from console before console is removed. Remove console.
4. Remove indicator light box from shifter. Pull lamp socket out of light box. Remove light box. Remove screws that fasten shifter top plate. Remove top plate. Disconnect cable clip and cable pin from shifter. Remove 4 screws that fasten stock shifter to floor. Remove shifter.
5. Assemble front and rear brackets to Dual/Gate shifter.

Note:
Rear bracket has slots to allow for vertical adjustment of shifter to console level. Fasten bolts in center of slots for initial installation.
6. Fasten cable housing to shifter with stock cable mounting clip. (Removed from stock shifter). Align lever hole with hole in cable end. Fasten cable end to lever with stock cable pin and clip.
7. Fasten shifter brackets to original mounting position on floor with stock hardware. Tighten cable pin in transmission arm (under car). Shift through pattern to check performance.
8. Fasten stock top plate to top of shifter with #10 slotted washer head screws and hex-nuts. Fasten ground wire of indicator lamp to the shifter frame.
9. Grasp the ends of the stock lamp housing and press the underside at the middle to flex the housing just enough to free the stock lens. Replace the stock lens with the Dual/Gate 2 lens.
10. Push the lamp socket back into the lamp housing. Place the lamp housing in the opening in the Dual/Gate2 shifter. Make sure that the lamp housing is correctly positioned.
11. Replace console in reverse order of its removal.
12. Place Escutcheon in position and fasten with 4 stock hold-down screws. Attach knob. Reconnect battery cable. The shifting pattern is explained and illustrated on the shipping carton.

Move stick of shifter to Neutral position. Refer to pattern drawing for neutral position.



REMOVAL OF CONSOLE, STOCK SHIFTER AND ASSOCIATED PARTS